

Saint Paul Public Schools

Designing for 21st Century Learning



St. Anthony Park School Design Committee Workshop 1



WELCOME!



Where are we?



Facilities Master Plan



“Plans are nothing;
planning is everything”

-Dwight D. Eisenhower

- Provides roadmap for District to implement sustainable and responsive facility projects by:
 - Establishing district-wide baseline facility needs
 - Identifying facility gaps and inequities across district
 - Providing criteria to fulfill projects fairly and efficiently
 - Determining implementation priorities for construction projects



Facilities Master Plan - Planning Process

May – August 2014

May 2014 - December 2014

January – June 2015

June - December 2015

Steering Committee

Phase 1
Prepare to Inform



Data Collection and Evaluation

- Strong Schools, Strong Communities 2.0 (strategic plan)
- Enrollment and building capacities
- Demographic research
- Personalized Learning; Technology Plan
- Updated Educational Adequacy Assessment

Phase 2
Consult > Involve



Establish District-wide Priorities, Baseline and Criteria

- Determine large-scale system priorities
- Audit each site facility gaps/needs (baseline)
- Determine facility improvement prioritization criteria
- Estimate improvements costs
- Funding recommendations

Phase 3
Involve > Collaborate



Develop Site-based Priorities and Plans

- Site and floor plan improvements and modifications
- Prioritized phasing of projects
- Estimated improvements costs
- Determine district's facilities governance committee structure

Phase 4
Inform



Finalize Plan and Share Results

- Inform stakeholders
- Convene district facilities governance committee
- Board of Education presentation

Facilities Master Plan Committee

Collaborate

Inform



Saint Paul PUBLIC SCHOOLS

A World of Opportunities

Facilities Master Plan



ACHIEVEMENT: School design and construction that meets the educational needs of our students.

ALIGNMENT: Funding sources, project planning, and process to provide equitable access to facilities funding across the district.

SUSTAINABILITY: Improved project efficiency and coordination leads to decreased costs.



FMP Video



Transformation



Transformation at Wellstone Elementary

(formerly Washington Technology Magnet)



Before



After



School Design Committee

Responsible for shaping the work at St. Anthony Park. Includes all stakeholders.

School Steering Committee

Responsible for guiding the overall process at St. Anthony Park. Includes: the principal, district academic and facilities leadership, building engineer, a parent and a staff member.



DESIGN WITH, NOT FOR

Welcome to the design team!





**WORKSHOP
1**

GOAL

To orient the School Design Committee to their charge and the framework of the FMP to date including the Facilities Vision, Principles, Standards and the priorities and project scope identified for St. Anthony Park Elementary School.

ACTIVITIES

- Introduction to process and conceptual scope
- Small Group work on what's special about St. Anthony Park Elementary School



**WORKSHOP
2**

April 18
5:30-7:30

GOAL

To provide and explore examples of what learning environments could look like to support 21st century learning.

ACTIVITIES

- Introduction to what others are doing
- How do facilities impact learning?
- Small Group work



**WORKSHOP
3**

MAY 2
5:30-7:30

GOAL

Program and adjacency exploration/validation

ACTIVITIES

- Review of space, program and what's included
- Design thinking hands-on exercise
- Report back and next steps



**WORKSHOP
4**

May 16
5:30-7:30

GOAL

Conceptual Design Validation

ACTIVITIES

- Report back outcomes of Workshop 3
- Synthesis: Presentation of conceptual design
- Small Group discussion
- Report back and next steps



Highest Hopes

Please introduce yourself, your connection to St. Anthony Park, and one idea that reflects your highest hope for this work.



BEYOND 21st C. LEARNING

“If you’re not prepared to be wrong, you’ll never come up with anything original.”

– SIR KEN ROBINSON

TED

FORCES OF CHANGE



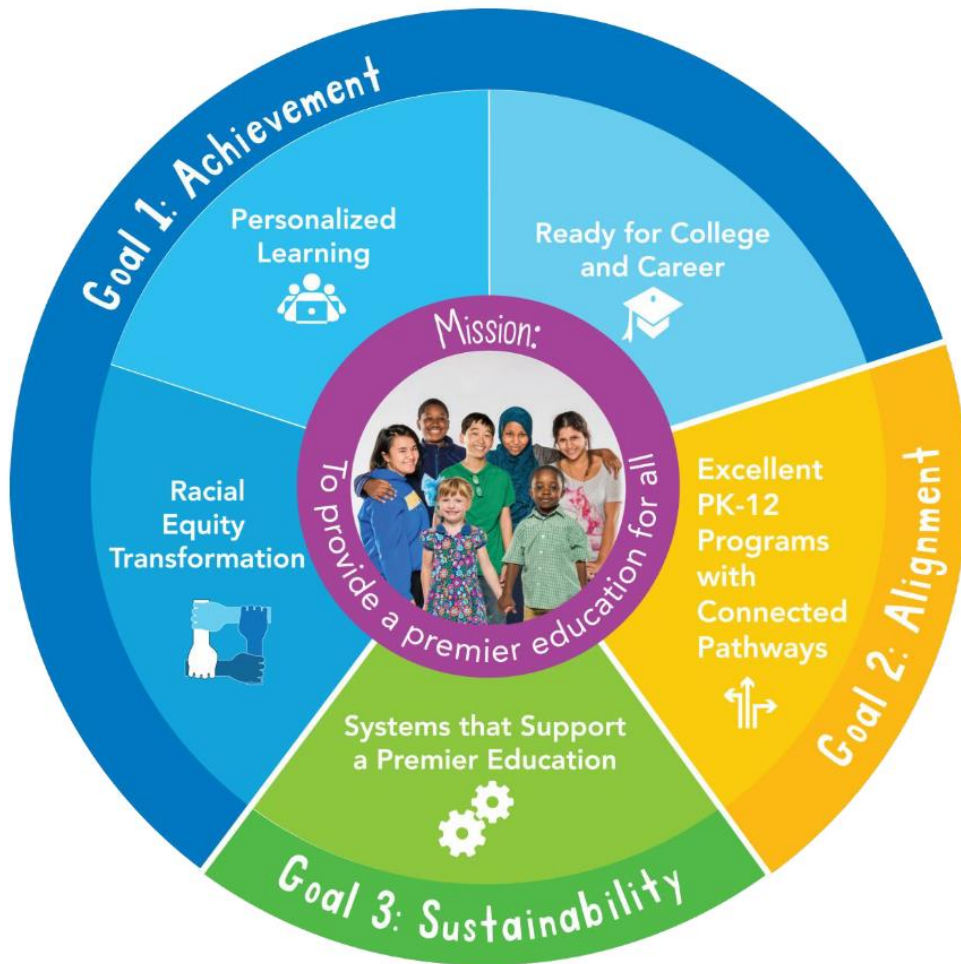
FMP Vision Principles Standards



WHAT'S CHANGING



I SEE... WE SEE



Vision Statement:

Imagine every student inspired, challenged, and cared for by exceptional educators.

Imagine your family welcomed, respected and valued by exceptional schools.

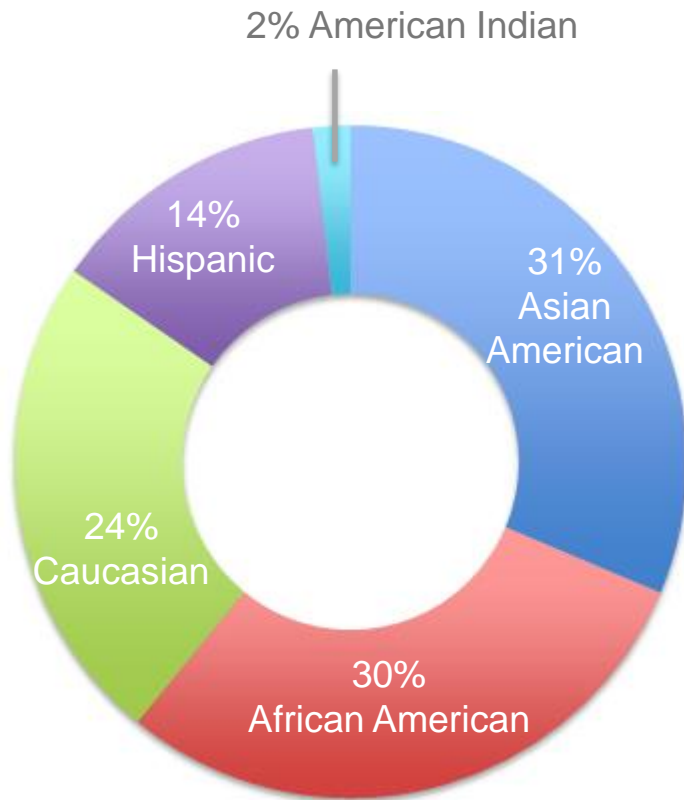
Imagine our community united, strengthened, and prepared for an exceptional future.

Saint Paul Public Schools:
Where imagination meets destination.

Mission Statement:

To provide a premier education for all.

District-at-a-Glance



- Students speak **100+ languages** and dialects
- **4,000*** students new to SPPS each year; 2,000* at the secondary level
- **17%** of students require **special education** services
- **73%** of students eligible for **free or reduced-price lunch**
- **2,000*** students experience **homelessness** during the school year

*Approximate numbers



Givens

- **Kids and academics are at the center of the conversation**
- **Strong Schools Strong Communities 2.0**
- **Courageous Conversations Protocol & Racial Equity**
- **Grade Configurations Remain**
- **Attendance Boundaries – community schools with magnet options**
- **Strong Emphasis on Early Childhood**
- **Inclusion**
- **Safety & Security**
- **Community Use & Community Ed**
- **Sustainability**



FACILITIES VISION STATEMENT

We envision versatile, equitable, healthy environments that balance the factors creating authentic, engaging, and personalized learning experiences to sustain our academic mission and deepen connections to our communities and world.



CUNNINGHAM
GROUP



FACILITY PRINCIPLES:

Overarching beliefs and commitments to what's important for all Saint Paul Public Schools.



FACILITY STANDARDS:

Define consistency, value and quality across all Saint Paul Public Schools facilities as they are maintained, improved or built.





Provide a variety of sizes and layouts of learning space for different teaching and learning styles. Each school should have a variety of spaces to serve different purposes and group sizes, and that can be arranged in a variety of ways.

Varied Space



Create a clear, identifiable main entry with direct access to the main office. If students do not use this entry when they take buses, student entry to be identifiable and welcoming.

Clear Main Entry



Outdoor environments can add valuable space for learning, and help students make connections between their studies and the physical environment. Each site will strive to have at least three types of outdoor learning settings: gardens, small and large gathering spaces and outdoor "classrooms."

Outdoor Learning Settings



Rooms that house people should have windows for connection to the outside and for natural light. Designs must consider security and control of light, glare and heat gain/loss. Incorporate windows to other spaces for distribution of light and visual connections.



Daylighting and Views



Building design must be appropriate to the student age. Schools will recognize and respect their learners' physical, intellectual and emotional characteristics. Compliance with the ADA for both students and adults is critical.

Appropriately Scaled Space



A student's social development is part of their education and growth. The school facility will provide formal and informal spaces for class groups and students to gather, and to interact and study in safe, manageable forums.

Student Gathering Space



Provide space in each facility to support all students with special needs. Space is needed both to facilitate inclusion within the classroom and for special services in specific settings. Design an atmosphere conducive to learning, in or near other learning spaces, to meet the student's special physical, sensory, and emotional needs. Meet standards for other learning space (daylight, views, acoustics, etc.)

Specialized Services Space



Design learning environments to address short and longer term modifications in response to educational program – hourly/daily and longer term/yearly changes in use.

Flexible/Adaptable Space



What is special about St. Anthony Park?



STARTING POINT...phase 3



CUNINGHAM
GROUP



St. Anthony Park Elementary School

2180 Knapp Street

Project Summary:

Saint Anthony Park Elementary School was originally constructed in 1953. An addition was constructed in 1974. The school is nearly to capacity and lacks the appropriate spaces necessary for many of its activities. One example of this is the serving line for the kitchen is in the hallway. Another example is that due to not having enough restrooms, entire classes have to go along and a restroom break for a few students can take up to 30 minutes.

The future master plan entails remodeling most of the existing interior. The future master plan also includes two small additions. One of the additions will include some additional teaching space as well as a more defined entry. The current main entry is hard to find which causes confusion for the community users. The second small addition will include a new kitchen and loading dock area. The interior spaces will be remodeled to include additional restrooms; more equity of access to natural light in the classrooms; a larger cafeteria and assembly space. There will also be ADA upgrades made.



Top 10 Site Identified Priorities

1. Classrooms- equity of space and size
2. Front Entrance- make more welcoming and safe, move entrance to be more visible
3. Assembly Space- create a large gathering space
4. Public Space- create space for 3:00-5:00 beyond DC + community ed +EDL, create small group spaces for DI & community Ed, create theater space, create teaming space
5. Natural Light- equity access to daylighting, solar tubes
6. Bathrooms- proximity to classrooms, to be updated
7. Hallways- congested during transitions, create better ADA access to parking and hallway, relocate food service distribution away from hallway
8. Storage- need
9. Personal space for students- need
10. Integrated exercise spaces- for family wellness, for counselors

Grade Levels: K-5
SY 2014/15 Enrollment: 519
Design Enrollment: 640

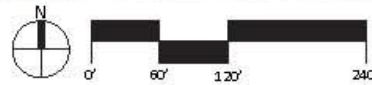
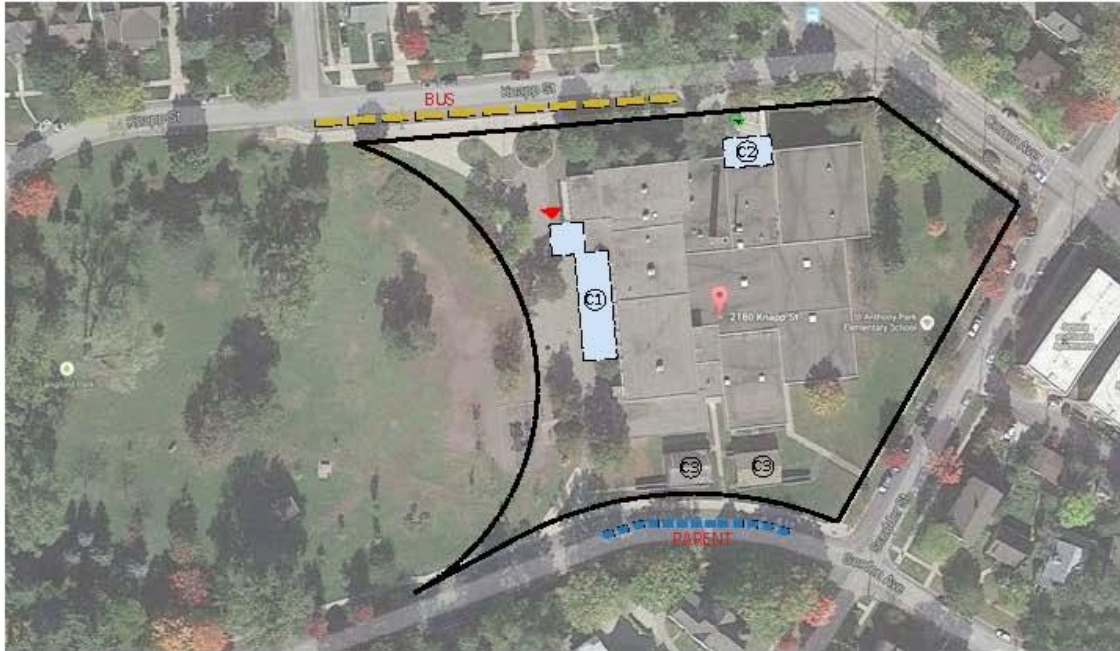


CUNNINGHAM
GROUP



St. Anthony Park Elementary School

Site Concept



LEGEND:

- C1: Classroom Addition - 7,421 SF
- C2: Kitchen/Loading Dock Addition - 935 SF
- C3: Remove Portable Classrooms

- Property Line
- ▲ Main Entry
- ▲ Secondary Entry
- ▲ Service Entry

- New Landscape and Playground
- Parking and Hardscape
- New Building Construction



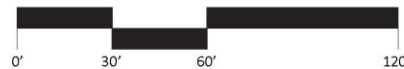
St. Anthony Park Elementary School

Conceptual Utilization Plan



- LEGEND:**
- C1: NEW BATHROOM
 - C2: REMOVE BATHROOM
 - C3: NEW STAIRS
 - C4: REMOVE STAIRS
 - C5: TOTAL KITCHEN REMODEL
 - C6: NEW CLERESTORY ABOVE

- General Learning
 - Science
 - Performing Arts
 - Career & Tech Education
 - Media Center
 - Dining
 - Athletics
 - Circulation
 - Facilities Support
 - Administration
 - Art
-
- Demolition / Removal
 - New / Existing
 - Property Line
 - Main Entry
 - Secondary Entry
 - Service Entry



MAIN LEVEL

4250

4.1



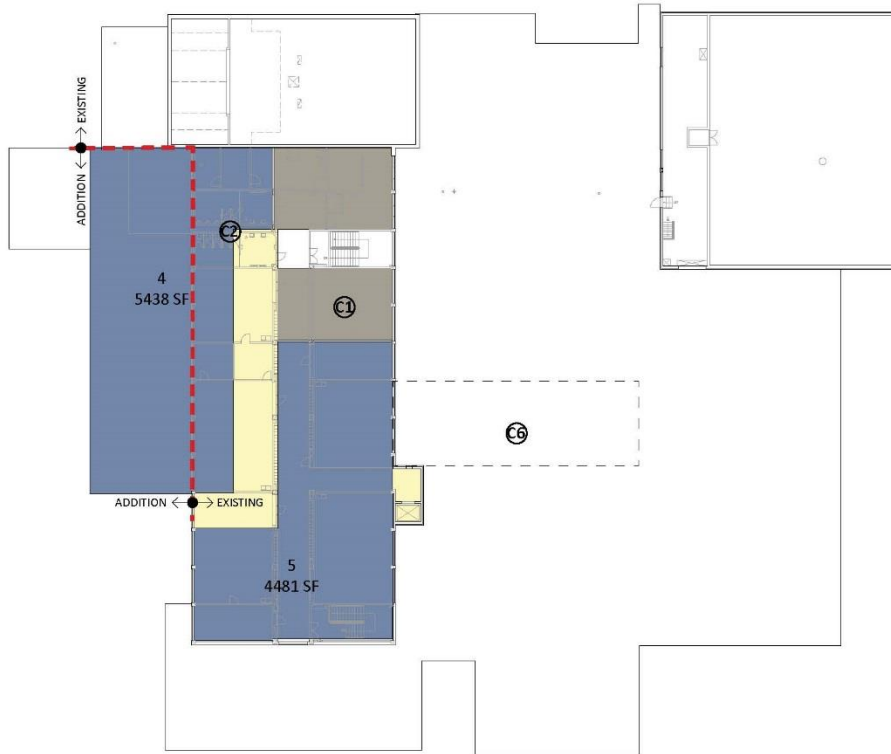
CUNNINGHAM
GROUP



St. Anthony Park Elementary School

Conceptual Utilization Plan

LEGEND:
 C1: NEW BATHROOM
 C2: REMOVE BATHROOM
 C6: NEW CLERESTORY (2,156 SF)



- Demolition / Removal
- New / Existing
- Property Line
- Main Entry
- Secondary Entry
- Service Entry
- General Learning
- Science
- Performing Arts
- Career & Tech Education
- Media Center
- Dining
- Athletics
- Circulation
- Facilities Support
- Administration
- Art

UPPER LEVEL

4250 **4.2**



CUNNINGHAM GROUP



St. Anthony Park Elementary School

Conceptual Construction Plan



Scope Package	New Construction	Heavy Remodel	Medium Remodel	Light Remodel	Finishes Only
A	7,089 SF	3,772 SF	12,042 SF		
B	1,267 SF				
C		672 SF	945 SF		2,683 SF
D		2,217 SF	9,631 SF	3,142 SF	1,712 SF
E					
TOTAL	8,356 SF	6,661 SF	22,618 SF	3,142 SF	4,395 SF

Line Items	Unit	Lump Sum
C1: New Bathrooms	1,746 sf	
C2: Remove Bathrooms	1,376 SF	
C3: New Stairs	327 SF	
C4: Remove Stairs	255 SF	
C5: Total Kitchen Remodel	3,141 SF	
C6: New Clerestory	2,156 SF	

- LEGEND:**
- C1: NEW BATHROOM
 - C2: REMOVE BATHROOM
 - C3: NEW STAIRS
 - C4: REMOVE STAIRS
 - C5: TOTAL KITCHEN REMODEL
 - C6: NEW CLERESTORY ABOVE (2,156 SF)

- Demolition / Removal
- New / Existing
- New Construction
- Heavy Remodel
- Medium Remodel
- Light Remodel
- Finishes Only
- No Work

MAIN LEVEL

4250 **(5.1)**



CUNNINGHAM GROUP











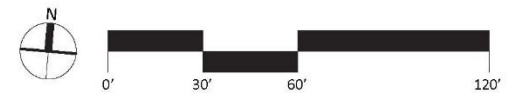
St. Anthony Park Elementary School

Conceptual Construction Plan



LEGEND:
 C1: NEW BATHROOM
 C2: REMOVE BATHROOM
 C6: NEW CLERESTORY (2,156 SF)

-  Demolition / Removal
-  New / Existing
-  New Construction
-  Heavy Remodel
-  Medium Remodel
-  Light Remodel
-  Finishes Only
-  No Work



UPPER LEVEL

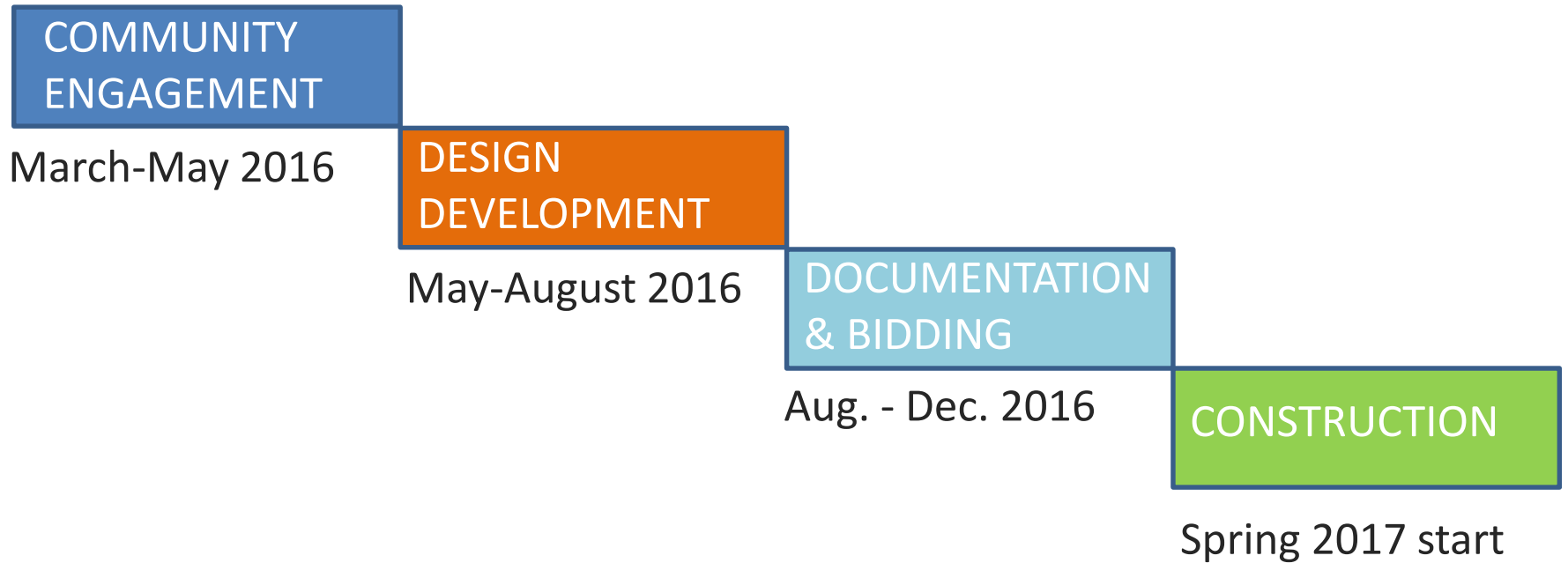
4250 **(5.2)**



CUNNINGHAM
GROUP



SCHEDULE



Next Steps...

Where are we?

WORKSHOP 1

To orient the School Design Committee to their charge and the framework of the FMP to date including the Facilities Vision, Principles, Standards and the priorities and project scope identified for St. Anthony Park Elementary School.

↑ ACTIVITIES

- Introduction to process and conceptual scope
- Small Group work on what's special about St. Anthony Park Elementary School

Envisioning the Future

WORKSHOP 2

APRIL 18
5:30-7:30

GOAL

To provide and explore examples of what learning environments could look like to support 21st century learning.

↑ ACTIVITIES

- Introduction to what others are doing
- How do facilities impact learning?
- Small Group work

What Do We Want?

WORKSHOP 3

MAY 2
5:30-7:30

GOAL

Program and adjacency exploration/validation

↑ ACTIVITIES

- Review of space, program and what's included
- Design thinking hands-on exercise
- Report back and next steps

Synthesis & Design Validation

WORKSHOP 4

MAY 16
5:30-7:30

GOAL

Conceptual Design Validation

↑ ACTIVITIES

- Report back outcomes of Workshop 3
- Synthesis: Presentation of conceptual design
- Small Group discussion
- Report back and next steps

REFLECTIONS

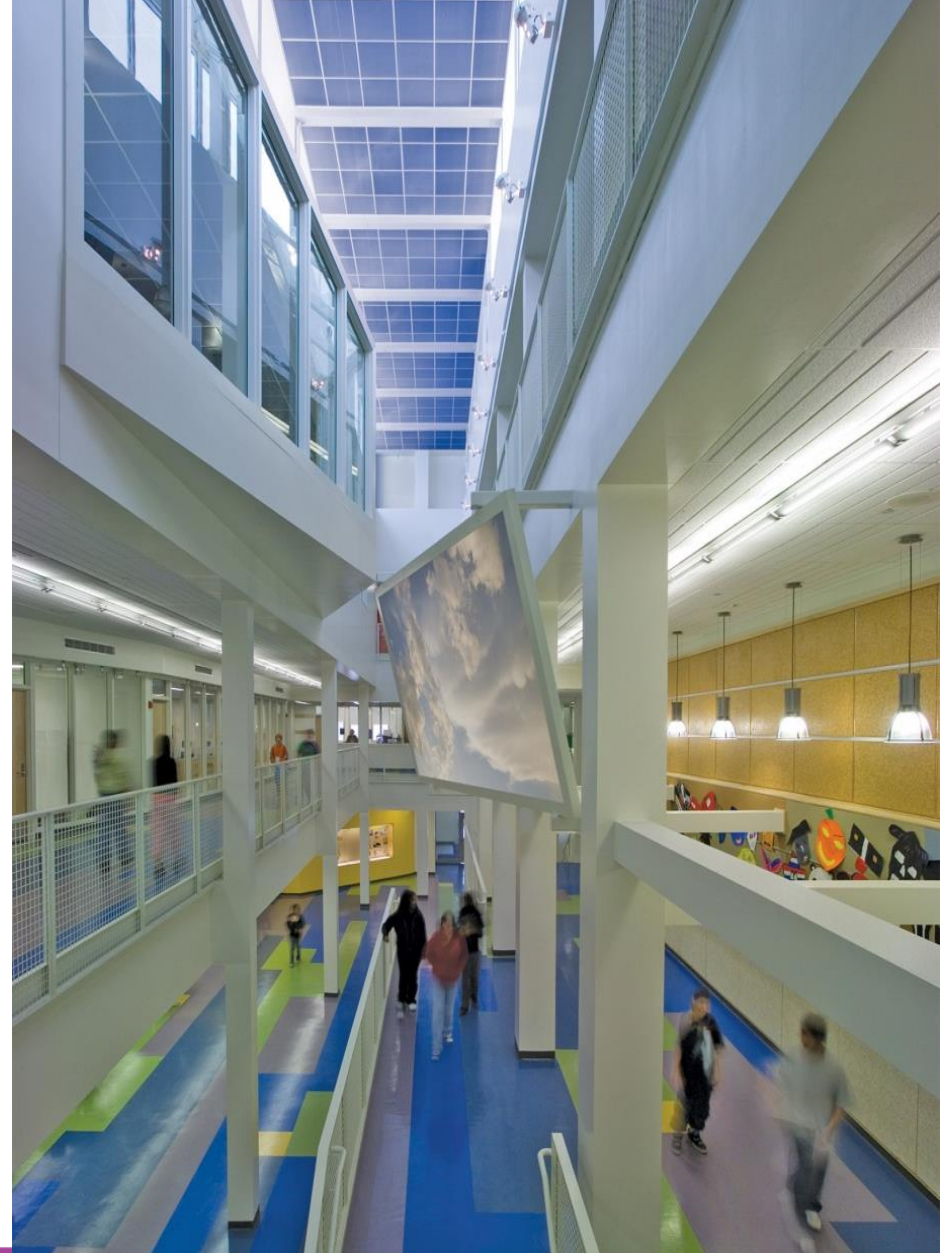
REFLECTIONS



Resources

External: Food for Thought videos
examples found on
www.pinterest.com/meg0239

Internal: <http://www.spps.org/fmp>



CUNINGHAM
GROUP

